

Photo: Gregoire Sieuw



Photo: Espen Brett / @espenvalverde



Photo: Roy E Jensen / @einarrar



Photo: Alex Stelmachovich



Photo: Kristof Massoels / @kristof.massoels



Photo: Rannvá Joensen - @rannvajoensen



Photo: Hannes Becker - @hannes_becker

SEVEN HIGHLIGHTS

The gateway to the north, Klaksvík, is also known as the fishing capital of the Faroes. The town grew rapidly during the 20th century and is the second largest in the country. Here, you'll find shops, bars, music venues, cafés, a pharmacy, a swimming pool and other services. Tunnels, ferries, causeways and helicopters connect you to the rest of the region, where you might stumble upon isolated villages hosting intriguing cafés and shops.

Explore the fjords and cliffs by boat, drive through the mountains or hike above them, but remember to stay on designated paths and be particularly careful.

The North offers something for everyone. Family-friendly parks, fearsome mountain passes, idyllic villages and a bustling industrial centre. Here we have selected 7 highlights worth a visit.

KALLURIN

- The lighthouse at the end of the world

On the northern tip of Kalsoy, a modest lighthouse stands in front of the impressive coastal cliffs. This view has become iconic, and getting there is one of the Faroe Islands' most popular hiking experiences.

A 17km road passing four tunnels connects the ferry terminal in Syðradalur to Trøllanes in the North. We recommend taking the bus due to narrow roads and limited parking options. The hike from Trøllanes is moderately easy, and the return trip usually takes between one and a half and two hours.

KUNOY

- Small grove, great mountains

Trees do not come to mind when picturing the typical Faroese landscape, but the tiny park in Kunoy is characteristic of the village. Visiting the lush grove is a popular activity for children and adults. Originally planted in 1914, the plantation offers a cosy space contradicting the dramatic landscape.

Ashes, spruces and birches surround a massive boulder called Eggjarsteinur. It is believed to once have toppled down from the surrounding mountain. See if you manage to climb on top of the boulder.

KLAKKUR

- Exceptional panorama view

The path to the mountain peak of Klakkur is a year-round popular hike for locals and visitors. Especially spectacular during clear summer sunsets, the 413 meters high mountain offers panoramic views over the town of Klaksvík and the surrounding islands.

A gravel road, locally known as "the Lovers' Path", leads to the pass between the two mountains of Klakkur and Hálgaelli. Here, the placename 'Á Vaktini' (the watch post), refers to the lookout for pirate attacks, ravaging the Faroe Islands in the past.

KING CHRISTIANS CHURCH

- Modern and traditional

The largest church in the Faroe Islands, designed by architect Peter Koch was consecrated in 1963. The architecture is inspired by old Viking halls as well as the familiar halls in traditional Faroese homes. It was built as a frame around the massive altarpiece, a fresco painted in 1901 by Joakim Skovsgaard, depicting the great banquet.

The church holds curious objects such as the 4000-year-old baptismal font, an actual boat hanging from the ceiling, and ten wooden plates depicting biblical stories.

ÁRNASFJØRÐUR

- The beach at the centre of the North

Located in the heart of the Northern Isles, you'll find the region's finest (and only) beach. During WWII, there was a constant fear of mines washing ashore. Today the bay is an idyllic summer refuge.

From Árnafjørður, a 2.5-hour roundtrip hike takes you to Katlarnir, the ancient local thingstead located in the geographic centre of the Northern isles. This is where sentences were made and disputes settled. The trip is only recommended for experienced hikers with no fear of heights.

CAPE ENNIBERG

- Europe's highest sea cliff

The Northernmost point on the Faroe Islands drops 754 meters into the ocean and is one of the highest promontories in the world.

In addition to its dramatic and spectacular appearance, Cape Enniberg is home to a rich birdlife where puffins, guillemots, razorbills and kittiwakes can be seen.

On foot, Enniberg can be reached from Viðareiði. Alternatively, you can experience the cliff by boat at sea.

Please note that the hike is difficult and absolutely not for the faint-hearted. We only recommend hikers to go with a professional guide.

THE OLD POSTAL ROUTE

- Reaching remoteness

The old postal route starts in Hvannasund where you board the ferry. The first stop is the peaceful and picturesque island of Svinoy where you'll find a unique memorial known as "the Drop". The next stop is Fugloy, rich in history and myths. Kirkja is the main village on the island and has the only shop. Finally, the ferry reaches Hattarvík, the easternmost corner of the Faroes.

It is possible to hop on and hop off along the route, but weather conditions, infrequent ferry schedule and limited housing and shopping options require planning ahead of time.

WHAT WHEN WHERE

VISIT WHATSON.FO TO SEE WHAT EVENTS ARE IN THE NORTHERN ISLES DURING YOUR STAY.

YOUR OFFICIAL GUIDE TO WHAT'S ON IN THE FAROE ISLANDS.

What's On

RESPECT NATURE AND LOCALS

You will see signs with guidelines like these while travelling in the Faroe Islands.



RESPECT
In Faroese: 'Virding' [v'ir:ɟɪŋ]

Please have **virding** for the privacy of homeowners in this neighbourhood.



RESPECT
In Faroese: 'Virding' [v'ir:ɟɪŋ]

Please have **virding** for the birdlife in this area by walking only on the designated path.



RESPECT
In Faroese: 'Virding' [v'ir:ɟɪŋ]

Please have **virding** for the sheep in this area by keeping your distance. Remember to close all gates behind you.



GUIDELINES

Following these simple yet essential guidelines will give you an enjoyable and unforgettable journey in the Faroe Islands

- ▶ Stay on designated paths at all times
- ▶ It is customary to always keep your voice down when travelling in nature
- ▶ Always bring your rubbish with you
- ▶ Minimise disturbing sheep, wildlife, and nature by walking on designated paths
- ▶ Keep up the tradition. Gather litter and loose wool on your journey
- ▶ Never build or take down ancient cairns – they function as landmarks so you don't get lost
- ▶ Camping is only permitted at designated campsites
- ▶ Check weather forecasts to see if hiking is advisable
- ▶ Equip yourself for all types of weather
- ▶ Beware! It can be cold in the mountain
- ▶ Refrain from walking too close to cliffs – no picture is worth dying for
- ▶ Always hike with others. It is recommended to hike with a local guide
- ▶ Notify someone where you plan to hike. It is advisable to leave your 'safe travel' leaflet
- ▶ Keep informed about seasonal farming and hunting activities

DRIVING

All major highways are paved. Many roads and tunnels leading to villages can be very narrow, so please choose a safe speed according to the conditions.

On the map you can see which roads are one-lane roads. To keep traffic flowing, these roads have lay-bys (widened sections formed to one side as to leave the road free for others to pass).

These lay-bys are NOT to be used for parking.

PUBLIC TRANSPORT

Public transport around the islands is efficient and affordable. If you have the time to travel according to the pace of the timetables, you won't need to rent a car.

Timetable for the buses can be found here:

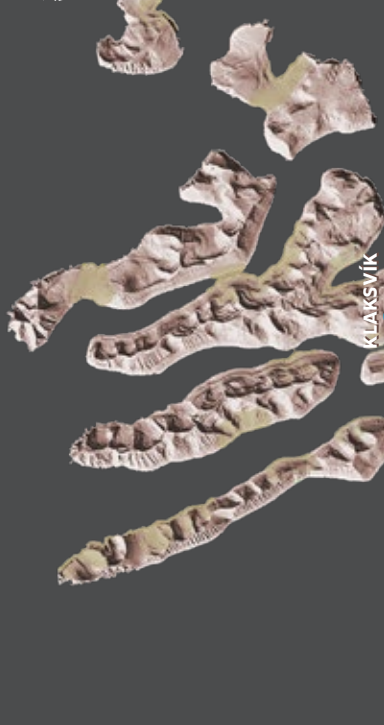


Visit Faroe Islands

— yours to unfold

THE NORTHERN ISLES

unionspiss



Klaksvík

REGIONAL TOURIST INFORMATION OFFICE
FOR THE NORTHERN ISLES

VISIT NORDØY
SITUATED IN THE HEART OF KLAHSVÍK

PHONE: +298 456939
E-MAIL: INFO@KLAHSVÍK.FO

OFFICE HOURS:
MON-FRI: 9 AM – 5:30 PM
SATURDAY: 10 AM – 2 PM

visitnordoy.fo

Visit Nordøy



NORTHERN ISLES



The region is known for imposing and towering mountains, casting long shadows over its idyllic villages. One in ten Faroes is a Northern Islander and most of them live in the regional centre of Klaksvík which has been connected to Eysturoy by an underwater tunnel since 2006.

The six islands Fugloy, Svinoy, Váðoy, Borðoy, Kunoy and Kalsoy, are collectively known as the Northern Isles. Communities here have been divided by rough oceans and tall mountains but are connected by a shared history and identity.

WELCOME TO THE NORTH

NORÐOYGGJAR

